



Cold Chain | Temperature-controlled Packaging Experts  
Dedicated to Fresh Food and Pharmaceuticals

---



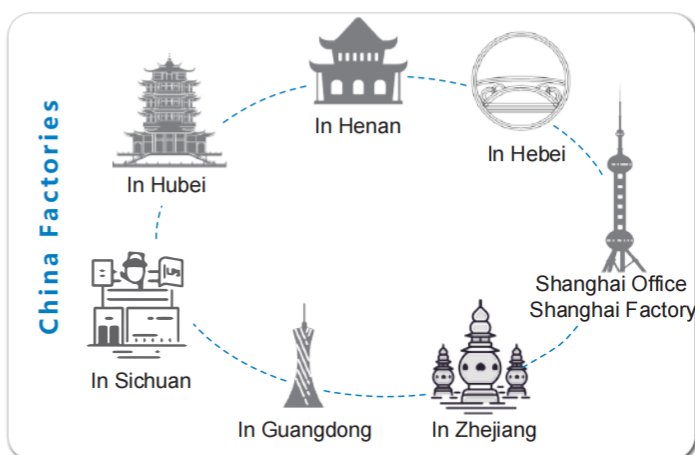
**Shanghai Huizhou Industrial Co., Ltd.**

SHANGHAI | CHINA

Refrigerant & Thermal Packaging Double Ensurance For Ambient Temperature

# Company Profile

Shanghai HuiZhou Industrial Co., Ltd. was founded in 2011 with registered capital of 30 million RMB. Involved in cold chain industry and serving for food and medicine associated customers, we are committed to providing integrated and professional temperature-controlled packages for temperature-sensitive items during their cold chain transportation. Through more effective and protective packages, we make people's life safe, convenient and reliable. Our products are Gel Ice Pack, Water Injection Ice Pack, Hydrate Dry Ice Pack, Ice Brick, Insulated Box Liner, Thermal Bag, Cooler Box, Insulation Carton Box, and other cold chain packaging materials.



**MISSION:** Cold chain temperature-control packaging, Ensure your life better quality

**VISION:** To be the global leader in cold chain packaging

**CORE VALUE:** Truth; Progress; Innovation; Collaborated; Sharing

**PRINCIPLE:** Customer-oriented, Value sustainable development

## Main Fields Applied



Dedicated to cold chain temperature-controlled packaging & Offer our customer professional solutions

# Gel Ice Pack

## Colder for Longer



- ◇ Non-toxic and easy to use
- ◇ Put it into cold storage to fully freeze it before use
- ◇ Help to reduce product temperature during transit, Or for cold therapy
- ◇ Environmentally-friendly, recyclable within warranty period
- ◇ Delivery: Normal temperature or frozen, In plastic basket or carton box
- ◇ Round-angle ice pack available to better protect product

Weight (g)	Size (cm)	Bag Materials	Phase-change Temperature
45	10.5*7.5	PE PE/PA PE/PET Laminated non-woven fabrics	-10℃, -15℃, -18℃, -25℃, 0℃, 5℃, 18℃, 22℃
100	13* 8		
250	18*1 1		
500	22*14.5		
750	24*14.5		
2000	32*29.5		

**Note:** Customized options are available.



# Water Injection Ice Pack

## Colder for Longer



- ◇ Cool storage item inside, easy to transport
- ◇ Fill water and put into the cold storage to fully freeze it before use
- ◇ Waterproof, Long-lasting freezing
- ◇ Help to reduce product temperature during transit, Or for cold therapy
- ◇ Environmentally-friendly, recyclable within warranty period
- ◇ Need fill water on site, suitable for small volume
- ◇ Delivery: In carton box

Capacity (ml)	Size (cm)	Bag Material	Phase-change Temperature
100	9*12.5	PE	0°C
200	10*15.5		
400	12*19.5		
500	12.5*21		
600	13*23		

**Note:** Customized options are available.





# Hydrate Dry Ice Pack

Colder for Longer, Freely Collapsible



- ◇ Particles inside, easy to transport
- ◇ Free folding and cutting
- ◇ Soak enough water and be fully frozen before use
- ◇ Help to reduce product temperature during transit, Or for cold therapy
- ◇ Environmentally-friendly, recyclable within warranty period
- ◇ Water needed, suitable for small volume
- ◇ Delivery: In carton box

Pieces/sheet	Size (cm)	Bag Material	Phase-change Temperature
1*1	14.5*10	PE/PA PE/PET Laminated non-woven fabrics Craft paper	0℃
3*3	28*39		
3*4	28*39		
4*6	28*39		
6*6	42*39		

**Note:** Customized options are available.



# Dry Ice

Colder for Longer, Easy and Clean



- ◇ Easily liquefied, Colorless&tasteless
- ◇ Help to reduce product temperature during cold chain transit
- ◇ For food and medicine cold chain transit & Industrial cleaning
- ◇ Especially suitable for ice cream
- ◇ Cleaner than water ice
- ◇ Attention to prevent frostbite
- ◇ Delivery: In bucket

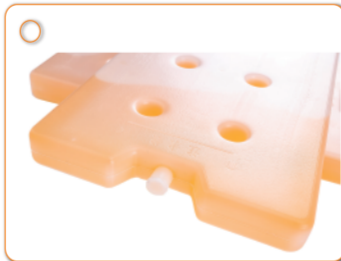
Weight (g)	Bag Material	Freezing Temperature
250	Pearlized film	-78℃
500		
Dry particles		

**Note:** Customized options are available.



# Ice Brick

Colder for Longer, Recyclable



- ◇ Customized mold, good plasticity
- ◇ Put it into cold storage to be fully frozen before use
- ◇ Help to reduce product temperature during cold chain transit
- ◇ Reusable, non-toxic, eco-friendly
- ◇ Delivery: In carton box

Weight (g)	Size (cm)	Brick Material	Phase-change Temperature
250	16.5*9*2.3	HDPE	-10℃, -15℃, -18℃, -25℃, 0℃, 5℃, 18℃, 22℃
450	17.5*12.5*2.5		
1000	22*17.4*2.5		
1200	30*18.5*2.7		
1300	33*23*2		

**Note:** Customized options are available.





# Insulated Box Liner

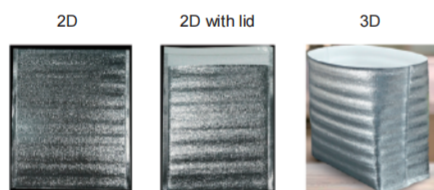
New Thermal Insulated Materials, Long-lasting



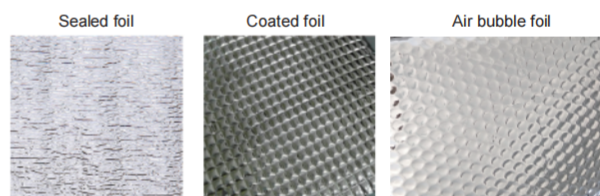
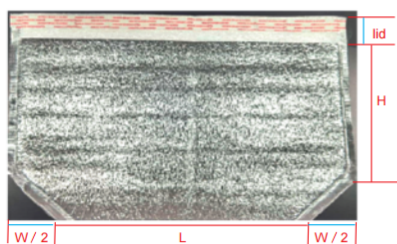
- ◇ New thermal insulated materials
- ◇ High temperature pressing, Size 2cm larger recommended
- ◇ Looks clean with silver color
- ◇ Reusable, non-toxic, light weight
- ◇ Delivery: In carton box

Size (cm)	Thickness (mm)	Material	Options
32*22*30	2	Sealed Foil	Inner layer
32*23*28	2.5	Coated Foil	Cover, Sealing
37.5*25.5*34	3	Air Bubble Foil	2D/3D

**Note:** Customized options are available.



3D with lid





# Thermal Bag

## New Thermal Insulation Materials, Long-lasting



- ◇ Keep cold or heat, usually with ice pack
- ◇ Collapsible, portable
- ◇ For daily life and outdoor picnics, keep food fresh
- ◇ Gift packaging, urban delivery, cold chain transportation
- ◇ Recyclable, non-toxic, light weight
- ◇ Delivery: In carton box

Outer Material	Thermal Layer	Inner Material	Accessories
Non-woven Fabric	EPE Pearl Cotton Sponge	EPE Pearl Cotton High-end Foil PVC PEVA	Zipper
Oxford Cloth			Ribbon
PVC			Plastic Button
Woven Cloth			Mesh Cloth
Dacron Cloth			Elastic Cord

**Note:** Customized as per diverse needs; color patterns are generally silk-screened; non-woven insulation bags can be laminated or heat transfer or offset printing, Oxford cloth or polyester insulation bags are mostly heat transfer.



# HDPE Cooler Box

New Thermal Insulation Materials, Long-lasting, Efficient Transit



- ◇ New thermal insulation material, excellent thermal insulation performance
- ◇ Large space and efficient transit
- ◇ Good toughness and durable
- ◇ For take-out&urban delivery,Or for cold chain transit
- ◇ Non-toxic, recyclable

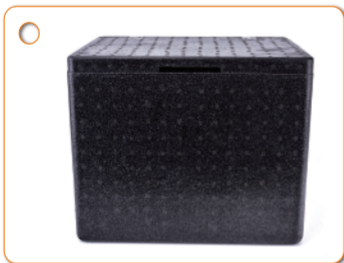
Type	Capacity (L)	Exterior Size (cm) L*W*H	Exterior Material	Middle Thermal Insulation Layer	Interior Material
Food	5L	27*20.5*17.5	PP PE	PU EPS	PP PS PE
	16L	36*25.6*38			
	26L	41.2*29.8*43			
	65L	60*48.9*36.7			
	85L	64*52*37.5			
	120L with wheel	105*45*48			
Pharmaceuticals	17L	38*38*38	PVC	PU+VIP VIP	PS ABS VIP
	45L	54*42*48	PP		
	84L	65*52*52	ABS		
	105L	74*58*49	PET		

**Note:** Customized options are available.



# EPP Cooler Box

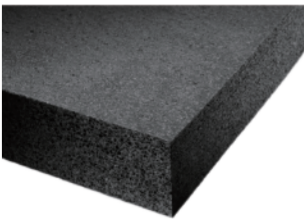
New Thermal Insulation Material, Long-lasting, High Efficient



- ◇ New materials, high structural strength
- ◇ Superior cushioning performance
- ◇ Non-toxic, tasteless, light weight
- ◇ Professional thermal and fresh keeping
- ◇ Drop-resistant and durable
- ◇ For shipment, take-out&urban delivery,Or for cold chain transit
- ◇ Environmentally friendly,degradable

Capacity (l)	Exterior Size (cm) L*W*H	Interior Size (cm) L*W*H	Options
34	60*40*25	54*34*20	Exterior Color, Strap, Temperature Monitor
43	48*38*40	42*32*34	
60	56*45*38	50*39*32	
81	66*51*38	60*45*31	
108	66*52*50	60*45*42	

**Note:**Customized options are available.



# EPS Cooler Box

New Insulation Material, Light Weight, High Efficient



- ◇ Material EPS, customized mold
- ◇ Compressive resistance, heat preservation, heat insulation
- ◇ Light weight and easy to use
- ◇ Express delivery, efficient turnover
- ◇ Recyclable

Type	Exterior Size (cm) L*W*H	Interior Size (cm) L*W*H	Thickness (mm)
Seafood small box	38*26*20	34*22*16	20
Post3#	40*28*20	36*24*16	20
Post4#	34*22*18	30*18*14	20
Post5#	29*17*19	25*13*15	20
Post6#	26*15*18	23*12*15	15

**Note:** Customized options are available.





# Other Products

## Insulation Carton Box



New materials, Environmentally friendly

- ◇ Non-toxic, moisture-proof
- ◇ Express packaging, thermal insulation
- ◇ Foldable and printable patterns
- ◇ Recyclable

Type	Exterior Material	Thickness (mm/fluting)	Materials
KT Board	Craft Paper/White Cardboard	5mm / 7mm	Foil
EPE	Craft Paper/White Cardboard	3 layers / 5 layers	Sealed, Coated and Air Bubble Foil, XPS

**Note:** Customized options are available.

## Instant Cold Pack



Easy to use, Pain relief

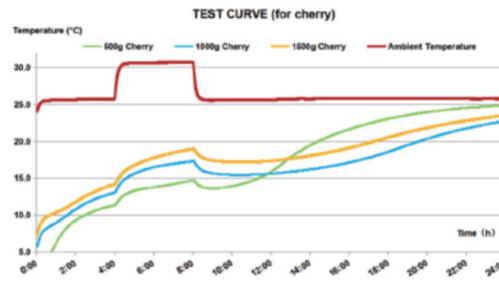
- ◇ Non-toxic, external use, disposable
- ◇ For cooling and pain relief
- ◇ Use directly after squeezing the inner bag, no pre-cooling needed
- ◇ Quick cooling, keep cold for 30-60 minutes
- ◇ Do not heat it and do not eat

Weight (g)	Size (cm)	Outer Bag Material	Inner Material
60	11*10	PE/PA	Water, Urea Particle
100	15*13		
220	21.5*15.3		

**Note:** Customized options are available.

# Solutions Verified

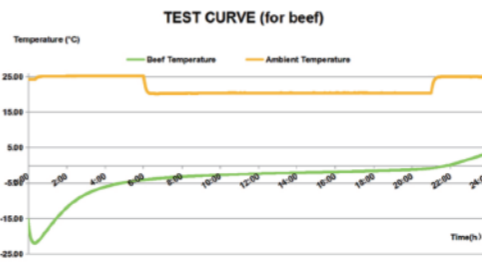
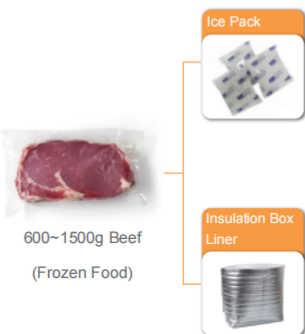
## For Cherry



### Conclusion:

This solution can maintain cherry fresh up to 24 hours through the simulation of cherry shipment during Spring and Autumn.

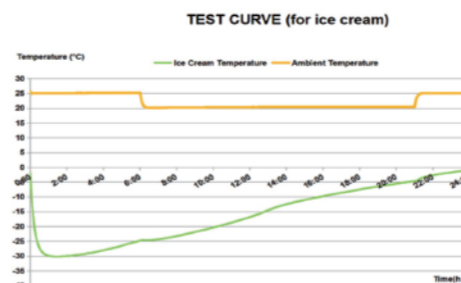
## For Beef



### Conclusion:

This solution can maintain frozen steak under the temperature of minus 1 °C or less up to 20 hours through the simulation of frozen steak shipment during Spring

## For Ice cream



### Conclusion:

This solution can maintain ice cream under the temperature of minus 5 °C or less up to 21 hours through the simulation of ice cream shipment during Spring and Autumn seasons.

## Lab Facilities

Multi-channel data logger



Constant temperature and humidity room



Temperature Recorder



\*Note: Feel free to contact us for more customized solution verification.

# Company Qualification



## Customers



## Shanghai Huizhou Industrial Co., Ltd.



**Phone:**+86-021- 5106 1506

**Fax:**+86-21- 5985 7773

**Website:**[www.icebagchina.com](http://www.icebagchina.com)(EN) [www.huizhou1.com](http://www.huizhou1.com)(CN)

**Address:**Room 1103,Building B,Baolong Square,No.590,Huijin Road,  
Qingpu District,Shanghai,China PC 201700

Temperature-controlled Packaging Ensure your life better quality